



Sustainable Mototourism Guide to the Province of Seville

Sustainable Mototourism

Guide to the Province of Seville



Published by:
PRODETUR, S. A.
Turismo de la Provincia de Sevilla
Leonardo da Vinci, 16
Isla de la Cartuja
41092, Sevilla
Tel. +34 954 486 800
www.turismosevilla.org

Produced by:
Evento park el Ronquillo, S.L.

Content management:
Manuel Álvarez Ossorio

Design and layout:
Antonio Hidalgo Iglesias (BiciActivity)

Legal Deposit:
SE-1956-2022

1st edition. September 2022

Prints: Tecnographic, S.L. (Seville)





Images: Photo, Video & Drone

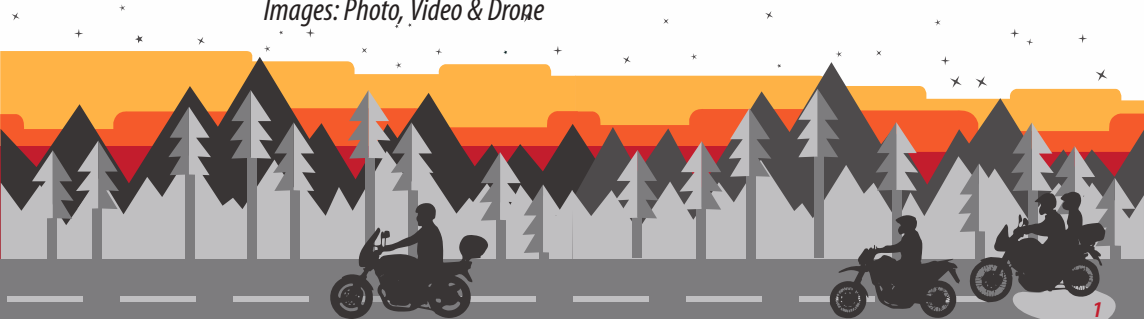
CONTENTS

Letter of Fernando Rodríguez Villalobos	3
<i>President. Seville County Council</i>	
Comment by Javier Garmendia	4
<i>President of the Spanish MotoTourism Association</i>	

Sustainable Mototourism Guide

1. Decalogue of the Moto-tourist	5
2. Introduction to mototourism	7
3. Mototourism routes in the province of Seville	14
4. Route map (4 routes)	16
5. Routes through the province	18
6. Off-road routes	38
7. Seville Road Map	48
8. Tips for a motorcycle route	51

9. Directory of companies that organise motorcycle routes (and/or rent bikes) in Seville	57
10. Clubs and rallies	58
11. Bibliography and acknowledgements	60



*A group of bikers on
the banks of the
River Guadalquivir
at Coria del Río,
getting on
the barge*

A full-page photograph of a biker in a white helmet and black gear riding a red and white motorcycle. The bike has dual round headlights. In the background, another biker is visible on a blue motorcycle, and a white van is parked on the side of a dirt road. The scene is set outdoors with trees in the background.

MOTOURISM, SUSTAINABLE ADVENTURE

Photo, Video & Drone

Travelling by Motorcycle in the province of Seville

Letter of Fernando Rodríguez Villalobos

President. Seville County Council



The Mototourism Guide of the Province of Seville is a resource and a tool for promoting our territory to a specific target market segment. We are talking about people who love to travel to the heartland and its towns and enjoy each landscape, each nook and cranny, each unique space. These travellers cherish every opportunity to engage with genuine local people and lifestyles.

They enjoy the journey itself, seeking to experience the sensations of the trip and discover new landscapes and towns.

We are confident that this tourism guide provides an additional incentive to attract more tourists to the province of Seville. Local towns and retailers will benefit from increased visits and stronger economic dynamics, tying the population to the territory.

This comprehensive but not exhaustive document for “biker” travellers includes five different routes that reflect the diversity of spaces in our rich province. It also contains two dirt track routes of scenic and historical interest.

Besides the routes and its “tracks”, it also offers detailed information on driving safety. We seek to provide tips and advice on careful and responsible driving to biker travellers. Though the vast majority know and obey the rules, we cannot overemphasise their importance.

In short, this publication intends to offer a travel product to encourage people inspired by travel experience and the synergy between road, environment and landscape to visit our province.

We are confident that you will enjoy our province.



Mototourism is born from a passion

Letter of Javier Garmendia

President of the Spanish MotoTourism Association



Mototourism is born out of a passion for travelling on motorcycles and learning about the rural environment. It encapsulates the desire to discover, learn, photograph and enjoy the extraordinary places and people one meets along the route. A route that often runs through back roads and natural environments.

We drive leisurely. We usually get away from the urban environment. We chat with the barkeepers we meet in the small towns along the route. They share exciting aspects of their lives with us, which we often like and find surprising. We tell them where we come from and where we are heading with our motorcycles loaded with bags. We discover gastronomic temples. We relax watching sunsets in natural spaces that make us forget the passing of time. And we rest in small hotels, comforted by the owners' kindness. We do not travel to reach a destination but rather enjoy the journey, typically on a rural road. Our destination is our own home; the point of departure is also the point of arrival. We ride our motorcycles to learn about the rural environment and mingle with its people. The travel experience enriches our spirit, and the establishments along the route benefit from their efforts and dedicated services.

Be it a solitary biker or a group of bikers; we help boost the rural economy as we cross off kilometres. We share our insight into the beauty of the natural spaces and the towns that we cross. Rallies, meetings with other biker groups and digital media are proven channels of communication to persuade our fellow bikers to travel. We recommend routes and places, as well as restaurants and hotels.

Gastronomic mototourism, relax mototourism, nature mototourism, or -why not- "simply mototourism" that brings together all the above. Any excuse is good for nurturing our passion: travelling on a bike to discover new roads and get to know new towns.



DECALOGUE OF THE MOTO-TOURIST

The moto-tourist:

- 1... greets other moto-tourists on the road.
- 2... is ready to help any biker in distress.
- 3... complies with traffic regulations.
- 4... slows down when entering a town and obeys traffic signs.
- 5... drives the motorcycle without causing noise nuisance.
- 6... promotes the local economy, enjoying its cuisine at hotels and restaurants.
- 7... serves as an ambassador for the areas through which they travel. When bikers arrive home, they share their pleasant experiences, recommending charming places and landscapes.
- 8... is mindful of the local way of life and embraces the customs of the towns or cities to which they travel.
- 9... is mindful of the environment and nature.
- 10... considers the motorcycle a family member.

The following maxim summarises this decalogue: *"For the motorcyclist, riding a motorcycle is a lifestyle in which camaraderie with the motorcycle community and respect for the environment prevails."*

Javier Garmendia



Mototourism provides a travel experience through the five senses.

Photo, Video & Drone





*Due to its size and climate, the province
of Seville is ideal for mototourism*

Introduction to Mototourism



"The moto-tourist is mindful of the environment and nature"



Prodetur

Motorcycle tourism or mototourism is a type of tourism that has attracted keen interest from bikers in recent years, particularly since the early 20th century. From the outset, motorcycles have been all about ADVENTURE-packed road trips.

Given this perception, a type of tourism known as MOTOTOURISM or Motorcycle Tourism has emerged since its early days.

Over time, it has become a way of life that embraces the full range

of biker lifestyles and types of motorcycles.

Nowadays, reaching the destination is no longer the primary goal of new moto-tourists. Above all, they want to enjoy the journey and the motorcycle, and visit new towns, monuments and awe-inspiring, spectacular natural spaces. The many details that enhance an exciting route and trip. They also seek closeness with the environment, a bond with the roads that cross majestic valleys, mountains



and natural landscapes, and connection and integration with the surroundings. The journey and the route are the primary goals. The true essence of motorcycling is living in symbiosis and harmony with the environment surrounding us.

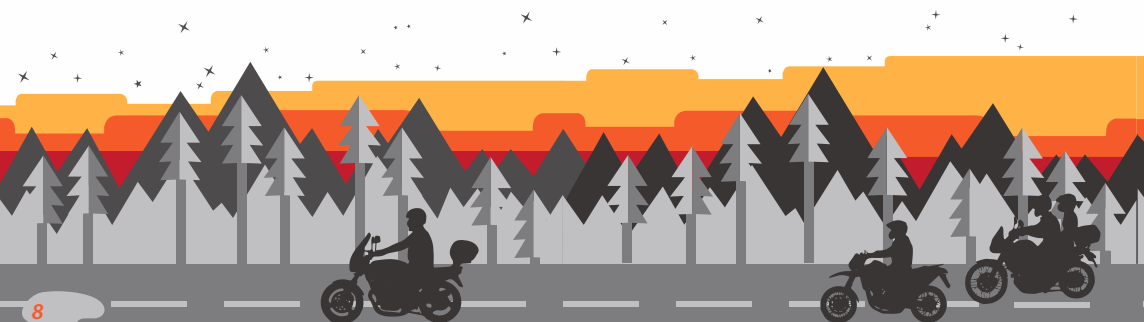
This travel guide of the province of Seville for bikers focuses on remote and unknown places and scenic routes that will take you through different ecosystems, mountains, forests, countryside, the River Guadalquivir, and Doñana.

Are you a biker?

Being a biker or a motorcyclist goes beyond mere words or riding a machine. It is not just a hobby. It is a lifestyle; it is a different perception of the road and trails; and, above all, it is about driving, the route, and the journey. Bikers are born and feel at home on the road. It guides and influences their decisions and, above all, remains with them for a lifetime.



DECALOGUE OF THE MOTO-TOURIST
*"The moto-tourist is ready to
in distress".*



*The motorcycle is a means
of transport intimately
linked to nature*



to help any biker

Photo, Video & Drone

Bikers cherish every curve and kilometre travelled in their life and feel a special bond with their motorcycle. That sense of freedom comes from the camaraderie and solidarity between bikers, no matter the category or type of motorcycle. This camaraderie and friendship, shared by thousands of bikers, is a lifestyle choice for those who live on two wheels.

MOTORCYCLE AND NATURE

Motorcycle and nature go hand in hand. Are motorcycles and nature your passion?

The purpose of the journey is learning; it is discovery; it is a way of feeling the world's wonders. The destination is important, but how you get there is perhaps more so. The poet Antonio Machado said: "Traveller, there is no path, the paths are made by walking".

Motorcycle and nature enjoy an intimate symbiosis, a combination of journey and surroundings, environment and machine, silence and freedom.



ECO-LABELS FOR MOTORCYCLES

The Directorate-General for Traffic uses eco-labels to classify vehicles, including motorcycles and mopeds. However, two-wheelers are rated differently from cars. The aim is to apply positive discrimination to the greenest vehicles, i.e., promote the least polluting and penalise the most polluting, in order to reduce pollution levels in large cities and improve air quality. It seeks to reduce pollution levels in large cities and enhance air quality.

The rating system is identical to the one used for cars, i.e. four DGT eco-labels (Zero, Eco, C and B) for motorcycles and mopeds. This means that over half of the two-wheelers in Spain do not qualify for the eco-label. How does this affect motorcyclists? Traffic restrictions affect bikers adversely in cities, including Madrid, where most of the city centre is off-limits to vehicles without the appropriate eco-label. Cities have implemented action plans for various scenarios with different traffic restrictions during high pollution episodes.

The various eco-labels that indicate our motorcycle's emissions



TYPES OF ECO-LABELS

These are:

ZERO: electric vehicles and plug-in hybrids with a range exceeding 40 km.

ECO: plug-in hybrid vehicles with a range below 40 km.

C: petrol vehicles that meet Euro 4 and Euro 3 emission standards for motorcycles

B: vehicles that meet Euro 2 standards.

We all have doubts about where to place the eco-label on the motorcycle. According to the DGT, the use of the eco-label is voluntary. However, since it facilitates the quick identification of the less polluting vehicles, they advise that the eco-label be placed on the lower right corner of the motorcycle's windshield, or failing that, in any visible place on the vehicle.

In Seville, you can get it at the Central Post Office at Avenida de la Constitución 32 (41001 Sevilla).



DGT



ELECTRIC MOTORCYCLES, ZERO EMISSIONS

History of the electric motorcycle

The history of electric motorcycles began in 1865 when Ogden Bolton Jr. of Canton, Ohio, applied for the first patent for an electric bicycle. In 1897, the manufacturer Humber unveiled a battery-powered electric bicycle with an engine mounted in front of the rear wheel at the Stanley Cycle Show.

In 1919, the Ransomes, Sims & Jeffries company developed a prototype electric motorcycle, but it did not pass the test phase. The Limelette brothers founded an electric motorcycle company called Socovel in 1936. However, production came to a standstill in 1948, producing only 400 units.

Earle Williams converted an ordinary motorcycle into an electric motorcycle in the early 1940s. In 1947, BG Bowden announced the launch of its Electric Bike model.

In 1967, Indian Motorcycle, headed by Floyd Clymer, created the Papoose prototype. In 1973, Mike Corbin set the first speed record of 162 km/h for an electric motorcycle. A year later,

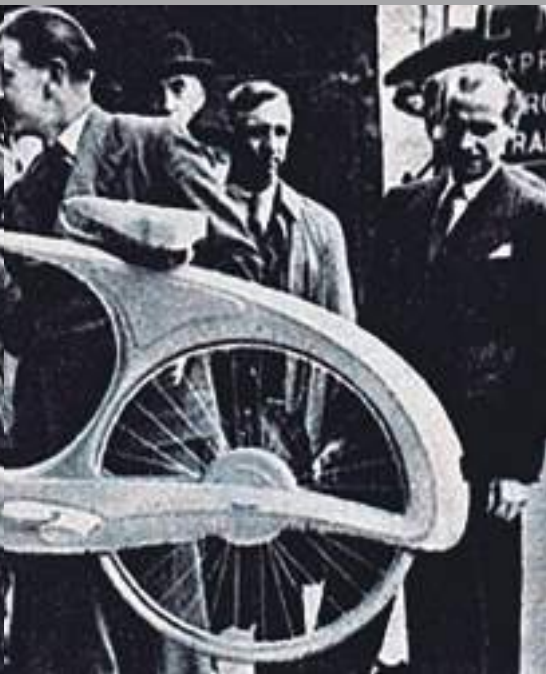
The Indian Papoose was introduced in 1967



Corbin-Gentry Inc. started selling its electric motorcycles.

In 1978, Steven Brooks built the Transitron MK2 prototype in Honolulu, Hawaii, using a 1971 Harley-Davidson Sporster XLH. Ten years later, Eyeball Engineering built the KawaSHOC-Ki. In 1996, the Peugeot Scoot'Elec was the first electric motorcycle to be mass-produced. The EMB Lectra VR24 was marketed in the late 1990s.





blog.modernmechanix.com

The Killacycle reached a new speed record of 245 km/h in 2000. Seven years later, the A123 Li-Ion broke the speed record reaching 270 km/h. In 2008, Orlando Tony Parker developed the Electra Green. The first-ever electric dirt bike race, 24 Hours of Electri-cross, was organised in 2009.

In 2010, the ElectroCat was the first electric motorcycle to reach the summit of Pikes Peak, setting a record in

the long-standing and renowned Pikes Peak International Hill Climb competition. Four years later, Harley-Davidson launched Project Livewire, its latest electric motorcycle.

Advantages of the electric motorcycle

Electric motorcycles and scooters have become increasingly popular as petrol prices continue to rise. Battery technology is continually improving, making this mode of transportation more practical.

- No air pollution.
- No noise pollution.
- The fuel consumption of the electric motor is approximately 10% of a petrol engine.
- It can be used indoors.
- No need to visit a petrol station. It can be recharged in the garage.
- There are e-scooters for less than €400.
- Low and affordable maintenance. (Eg.: no need to change the oil).



SUSTAINABLE MOTOTOURISM ROUTES *in the province of Seville*

ASSETS IN THE PROVINCE

The province of Seville is a **mosaic of cultures** deeply rooted in the remote past. The Guadalquivir's large river basin, Sierra Morena and the marshes in Doñana Natural Park offer the visitor a landscape of **extensive wetlands**, a haven for varied birdlife; **mountain trails** with exuberant Mediterranean vegetation; fighting bulls grazing in **pastures populated with centuries-old holm oaks**, or rolling flatlands where welcoming towns and monumental cities stand proud, living testimonies of a glorious past.

Seville is a province full of nuances; a **crossroads of cultures**, including Tartessians, Iberians, Arabs and Chris-

tians, palpable in its six regions, from Vía de la Plata and the Sevillian Sierra Morena to Guadalquivir-Doñana, El Aljarafe, La Campiña and Sierra Sur.

Its towns boast the richest **architectural heritage** in Andalusia, with **300 monuments declared as Assets of Cultural Interest**. And what can be

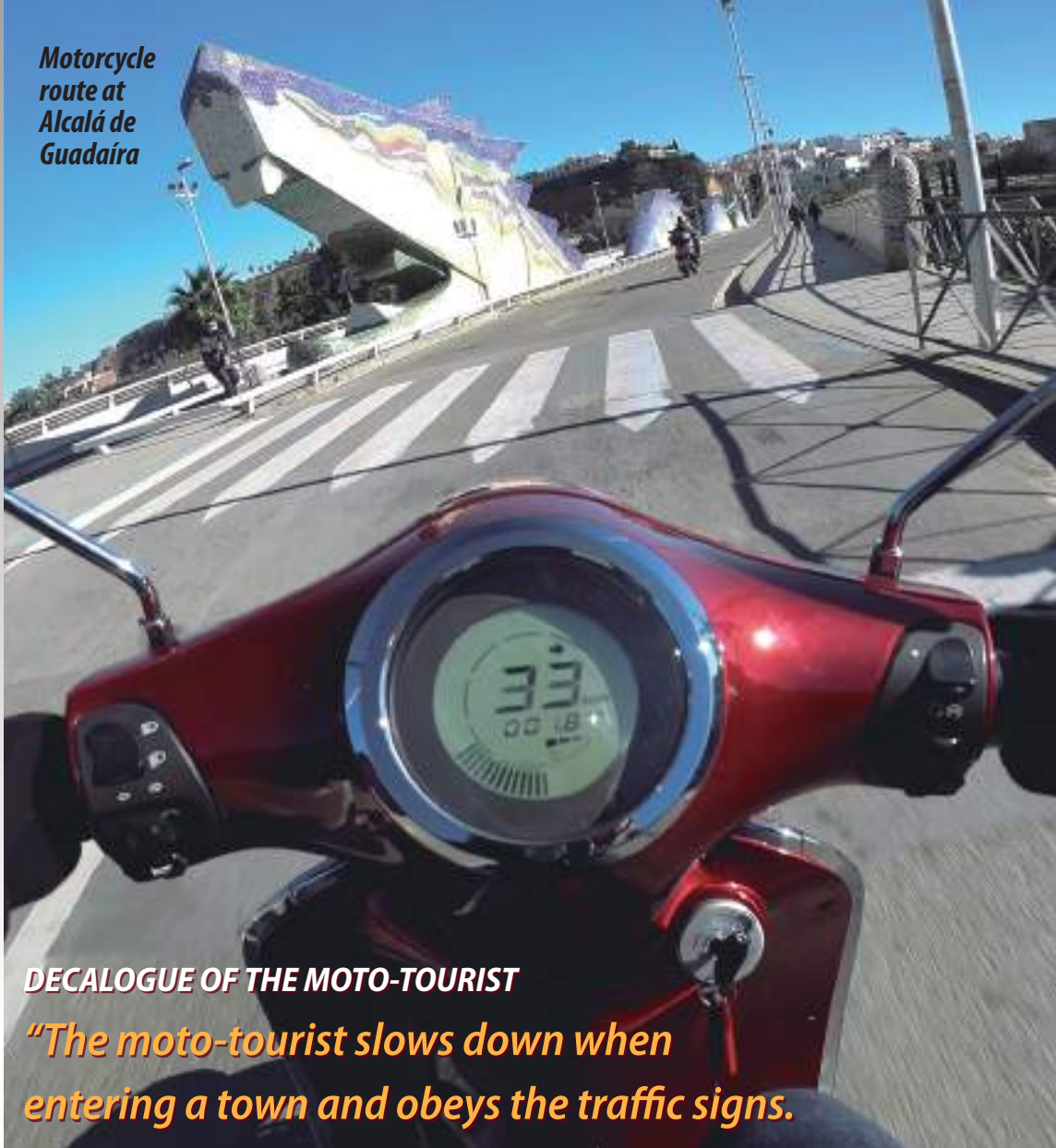
said about the natural heritage? The **Sierra Norte** and Doñana parks are two additional essential pillars of the province. Also notable are the **five Greenways** that run through Seville and other protected areas, its

many rich crafts, festivals, and popular customs, cuisine, flamenco, museums, fighting bulls and horses. **All this makes the province of Seville a unique place.**

*Seville's six counties boast a legacy rooted in the **history** of this land, bathed by the inland waterway of the River **Guadalquivir**.*



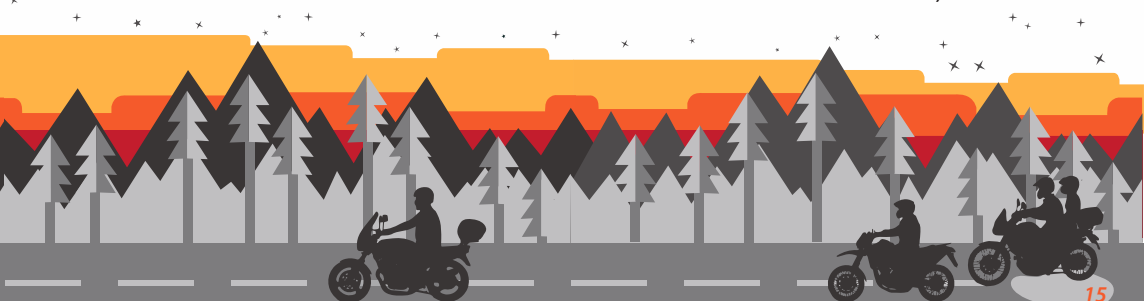
*Motorcycle
route at
Alcalá de
Guadaira*



DECALOGUE OF THE MOTO-TOURIST

*"The moto-tourist slows down when
entering a town and obeys the traffic signs."*

Photo, Video & Drone



ROUTE MAP

of the province of Seville



ROUTE 1
DOÑANA



ROUTE 2
SIERRA SUR



ROUTE 3
**SIERRA
MORENA**



ROUTE 4
"ROUTE 66"



ROUTE 5
THE GUADALQUIVIR



ROUTE 6
**THE WATER
ROUTE**
OFF ROAD



ROUTE 7
**THE HARBOUR
PILOT ROUTE**
OFF ROAD





SUSTAINABLE MOTOTOURISM ROUTES *in the province of Seville*

ROUTE 1 DOÑANA

GELVES/CORIA DEL RÍO/PUEBLA DEL RÍO/AZNALCÁZAR/PILAS/CARRIÓN DE LOS CÉSPEDES/CASTILLEJA DEL CAMPO/AZNALCÓLLAR/GERENA/SANTIPONCE/CAMAS/GELVES

LENGTH OF THE ROUTE:

APPROX. 115 KM

ESTIMATED DURATION:

2 HOURS

ROUTE DESCRIPTION

The route begins in **Gelves**, a town close to Seville with a nautical port. It crosses through two neighbouring cities, **Coria and Puebla del Río**. It then continues towards **Los Pinares de Aznalcázar**,

one of the most ecologically relevant forests in the province of Seville. It is the **first official Landscape Route in Andalusia**. Indeed, 85% of **Aznalcázar's** municipality (4,000 hectares) lies within Doñana.

The route continues through various towns in the Sevillian Aljarafe, such as **Pilas, Carrión de los Céspedes and Castilleja del Campo**, until it reaches **Aznalcóllar**, a village on



the southern edge of Sierra Norte, on the **River Guadamar**. **Aznalcóllar** is famous primarily for its pyrite mines, worked by the Romans since ancient times. The trip continues to **Gerena** and then **Santiponce**, a municipality renowned for its *ancient Roman city of Italica*. Next comes **Camas**, and finally, back to **Gelves**.



Doñana's landscape is populated with pine forests and "dehesas"

Prodetur

On the Coria del Río barge



Photo, Video & Drone

ALTERNATIVE ROUTES

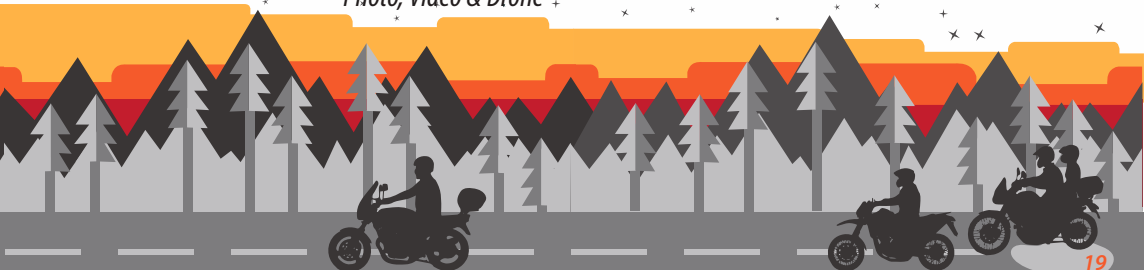
An alternative route to Coria del Río bypasses Gelves, using the Coria del Río barge to cross the River Guadalquivir. From Seville, take the A4 motorway towards Cádiz, continue until Exit 549, continue along the SE-3206 road, and cross through the La Isla industrial estate. Now, turn right towards Coria del Río (crossing the River Guadaira), and continue until the jetty:

<https://goo.gl/maps/MA6bNujnCdiBYDU29>

Prices (approx.):

WALK-ON PASSENGER: €1,00 / MOTORCYCLE OVER 125 cc: €2,00

<https://labarcadecoriatransportesfluvialescoriasl.wordpress.com>



MUST SEE SITES

ROUTE 1 DOÑANA

GELVES: *Puerto Gelves*, a small, pleasant sports marina on the River Guadalquivir.

CORIA DEL RÍO: *The barge* that ferries motor vehicles across the River Guadalquivir. Very useful at peak traffic hours in Sevilla.

PUEBLA DEL RÍO: *Cañada de los Pájaros*: a protected Nature Reserve with exceptional biodiversity and *the Dehesa de Abajo Visitors Centre/Alfonso X the Wise Monument*, honouring the king that built this site in the 13th century, soon after the conquest of Seville.

AZNALCÁZAR: *Guadimar Green Corridor*, a protected natural space created after the clean-up of the Mina de Aznalcóllar mining spill, and the Guadimar Visitors Centre.

PILAS: *Plaza de España* with an ancient fountain and stone basin.

CARRIÓN DE LOS CÉSPEDES: *Nuestra*



*The province
is home to
invaluable
landscape,
historical
and natural
treasures*

DECALOGUE OF THE
*"The moto-tour
areas he travels.
his good experi
places and disc*

Señora de la Consolación Shrine, home to the town's patroness.;

CASTILLEJA DEL CAMPO: The town's streets are lined with *lemon trees* instead of bitter orange trees.





Images: Prodetur

AZNALCÓLLAR: Aznalcóllar *Reservoir*.

GERENA: 5th-century palaeo-Christian basilica inside the town

CAMAS: *Monument to bullfighting* at

La Pañoleta, so-called because of the triangular shape of a former bullring.

SANTIPONCE: Late 1st-century *Roman theatre*; 2nd-century *Roman Amphitheatre and city of Italica*.



SUSTAINABLE MOTOTOURISM ROUTES *in the province of Seville*

ROUTE 2 DOÑANA

ALCALÁ DE GUADAÍRA/MORÓN DE LA FRONTERA/VILLANUEVA DE SAN JUAN/EL SAUCEJO/OSUNA/LANTEJUELA/MARCHENA/CARMONA/EL VISO DEL ALCOR/MAIRENA DEL ALCOR/ALCALÁ DE GUADAÍRA

LENGTH OF THE ROUTE:
APPROX. 201 KM

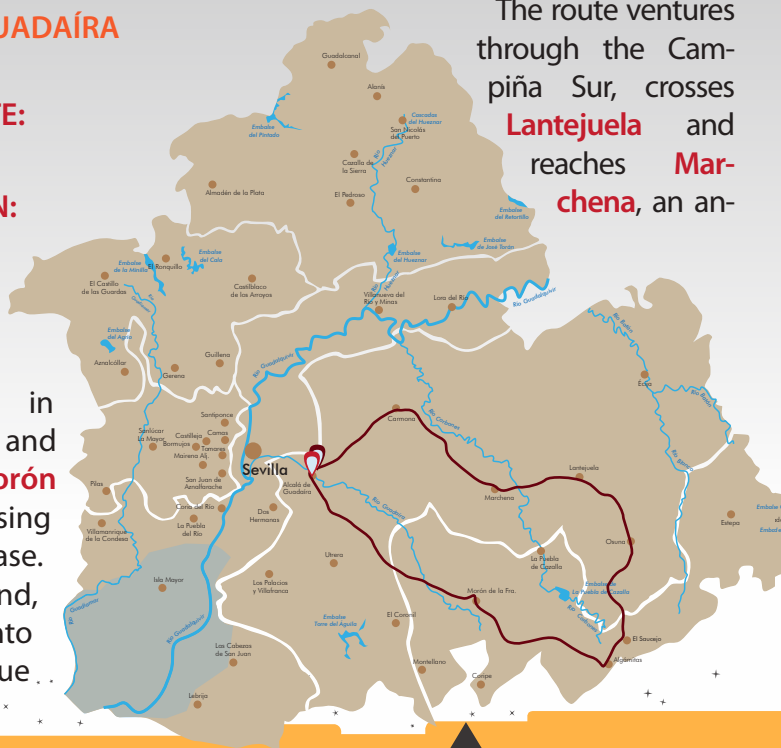
ESTIMATED DURATION:
3 HOURS AND 30 MINUTES

ROUTE DESCRIPTION

The route begins in **Alcalá de Guadaíra**, and continues until **Morón de la Frontera**, passing next to Morón Air Base. Leaving Morón behind, the route ventures into the Sierra, with a unique

landscape characterised by its natural and agricultural scenery. The next stop is **Villanueva de San Juan**, close to El Terril, the highest summit in Seville. The route continues through the Sevillian Sierra Sur, crossing **El Saucejo** towards **Osuna**, a stately, ducal city nestled in the Sevillian countryside.

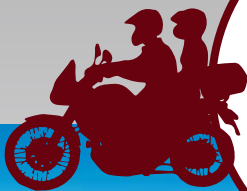
The route ventures through the Campiña Sur, crosses **Lantejuela** and reaches **Marchena**, an an-



cient Roman city nestled in the fertile River Corbones valley. The city earned the moniker “Unknown Beauty” because of its stunning beauty. Leaving Marchena behind, the route advances towards **Carmona**, one of Spain’s major tourist cities. It sits in the middle of the countryside, surrounded by an agricultural landscape consisting primarily of cereal crops.

The journey continues towards Los Alcores, passing through **El Viso and Mairena del Alcor**, and ends in **Alcalá de Guadaíra**.

Link to Wikiloc
for download



The monumental city of Osuna is a perfect meeting point

Prodetur



Views of Algámitas

ALTERNATIVE ROUTES

When the route passes through Villanueva de San Juan towards El Saucejo, an alternative route leads to the town of Algámitas and the Peñón de Algámitas, the second-highest peak in the province.



MUST SEE SITES

ROUTE 2 SIERRA SUR

ALCALÁ DE GUADAÍRA: *Alcalá Castle* inside the city. This former Muslim citadel dominates the entire town; 13th-century *Marchenilla Castle*, built for protection against the Benimerins (Alcalá de Guadaíra-Morón road); *River mills* for producing flour. Alcalá, known as Alcalá of the Bakers, supplied bread to Seville.

MORÓN DE LA FRONTERA: *Monument to the Gallo de Morón*, based on a local legend about ending up like a featherless and crowing cockerel (in dire straits); *San Miguel Church* with a magnificent bell tower built over a former Muslim minaret.

ALGÁMITAS: *Peñón de Algámitas*. This rock is part of a mountain range that is the highest in Seville province.

OSUNA: A *university* that has functioned uninterrupted since its founding in the mid-16th-century until



well into the 19th century; *Collegiate Church of Nuestra Señora de la Asunción*, a 16th-century Renaissance building protected by the Ducal House of Osuna; *Osuna quarries* from where stone has been quarried for building purposes since the times of the ancient Urso.

LANTEJUELA: *Gobierno Lagoon* and other wetlands in the Lantejuela Endorheic Complex.





Prodetur

*The millenarian
Carmona harbours
the remains of several
civilisations dating
back to the Iberians*

CARMONA: *Roman necropolis* is an archaeological site of great relevance, already in use in Iberian times; *Alcázar de la Puerta de Sevilla and Puerta de Córdoba*, the two gates to the city's old walled quarter; *Alcázar del Rey Don Pedro*, restored in the 13th century by King Pedro I. It now houses a Parador Hotel.

EL VISO DEL ALCOR: *Piedra del Gallo*, also known as "Piera er Gallo", is a rock weighing over 70 tons and a dominant town feature.

MARCHENA: *Churches* of San Juan Bautista and Santa María de la Mota and their towers, which were former Muslim minarets; *Monument to Padre Alvarado*, one of the last members of the Spanish Inquisition and a detractor of the 1812 Constitution; *Museum of the local sculptor Lorenzo Coullaut*, with many works to his credit, including the Don Quixote and Sancho statue in Madrid's Plaza de España.

MAIRENA DEL ALCOR: *Luna Castle*, built in the 14th century in the Almo-had and Mudejar style. It is currently a monument-museum.



SUSTAINABLE MOTOTOURISM ROUTES *in the province of Seville*

ROUTE 3

SIERRA MORENA

SAN JOSÉ DE LA RINCONADA/BRENES/
VILLAVERDE DEL RÍO/CANTILLANA/
ALCOLEA DEL RÍO/LORA DEL RÍO/
CONSTANTINA/LAS NAVAS DE LA CONCEPCIÓN/SAN NICOLÁS DEL PUERTO/
ALANÍS/GUADALCANAL/CAZALLA DE
LA SIERRA/EL PEDROSO/CASTILBLANCO
DE LOS ARROYOS/BURGUILLOS/
ALCALÁ DEL RÍO/SAN JOSÉ DE LA
RINCONADA

LENGTH OF THE ROUTE:

APPROX. 268 KM

ESTIMATED DURATION:

4 HOURS AND 30 MINUTES

ROUTE DESCRIPTION

This route begins in *Vega del Guadalquivir* County (fertile lands and unique urban landscape), particularly in **San José de la Rinconada**. It heads

towards **Brenes**, crosses the bridge over the *River Guadalquivir* and passes through **Villaverde del Río**, arriving at **Cantillana**. The route next passes through **Alcolea del Río**. It continues alongside the banks of the *River Guadalquivir* until it reaches **Lora del Río**. The route approaches the *Sevillian Sierra Norte*, and takes the road to **Constantina** before it arrives at **La Puebla de los Infantes**. It now ventures into the *Sevillian Sierra Norte*, a low mountain region that is



part of the **UNESCO Biosphere Reserve "Las Dehesas de la Sierra Morena**. The route crosses **Constantina** and arrives at **Navas de la Concepción**. This area is known to the bikers as the **"Route of 600 Curves"**.

The route continues towards **San Nicolás del Puerto, Alanís and Guadalcanal**. This mountainous area is not too steep, with mountains that slightly exceed 1,000 m in height. The highest is **La Capitana** in **Guadalcanal (1,007 masl)**.

ALTERNATIVE ROUTES

* An alternative route from Las Navas de la Concepción to San Nicolás del Puerto (SE-163 road) leads to **Cerro del Hierro**, a natural monument. You have to drive back to the main road to continue towards San Nicolás del Puerto.

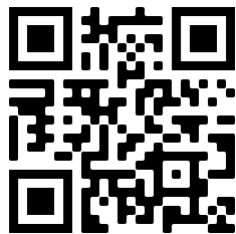
* **Villanueva del Río**: You can also drive to Villanueva del Río and Minas (a town with two urban centres), on the foothills of Sierra Norte, near the River Guadalquivir. This mining town traces its origins and economic roots to local coal mines.

* A few kilometres away lies **La Puebla de los Infantes**, a town bordering the province of Córdoba, situated between the villages of Lora de Río and Constantina.

<https://goo.gl/maps/fzLbnxiP9tsT1hA17>

Onwards through the Sierra Norte, the route reaches **Cazalla de la Sierra**, from where it continues to **El Pedroso** and **Castilblanco de los Arroyos**. Leaving **Sierra Norte** behind, the road heads down to the valley.

It arrives at **Burguillos** and **Alcalá del Río**. The routes crosses the **River Guadalquivir** again and ends at **San José de la Rinconada**.



Link to Wikiloc
for download



*The winding roads of the
Sierra Norte beckon us
to explore their villages*

Photo, Video & Drone



MUST SEE SITES

ROUTE 3 SIERRA MORENA

LORA DEL RÍO: *San Fernando Church*, initially designed by José Espiau, and built by Aníbal González; *Nuestra Señora de la Asunción Church*, with its high, multi-tiered bell tower and spire.

PUEBLA DE LOS INFANTES: *José Torán dam and reservoir*, located about four kilometres from the town.

CONSTANTINA: *Constantina Castle* and several other castles nearby; *Cerro del Hierro Natural Monument*, inside Sierra Norte Natural Park.

LAS NAVAS DE LA CONCEPCIÓN: *Nuestra Señora de Belén Shrine*, situated about 6 km from the town, next to the banks of River Ciudadeja, in the heart of Sierra Morena.



SAN NICOLÁS DEL PUERTO: *Cerro del Hierro*. This impressive limestone karst area, rich in iron minerals, is located 5 km south of San Nicolás; *Huéznar Waterfalls*, a natural monument on the River Rivera del Huéznar, situated about 2 km from San Nicolás del Puerto, and the *Artificial Natural Beach*.

ALANÍS: *Alanís Castle*, of Arab origin was renovated in the 14th century. It is located alongside the shrine, on the hill overlooking the town.

GUADALCANAL: 17th-century *Nuestra Señora de Guaditoca Shrine*, home to





The artificial beach at San Nicolás del Puerto is a major attraction in the summer months.

DECALOGUE OF THE MOTO-TOURIST
"the moto-tourist promotes the local economy, enjoying its cuisine at hotels and restaurants."

Prodetur

the town's patroness. It is situated 11 km from the town.

CAZALLA DE LA SIERRA: *Nuestra Señora de la Consolación Church*, built between the 14th and 18th centuries. It combines Mudejar, Renaissance and Baroque styles; *Cartuja de Cazalla de la Sierra*, from the late 15th century, is located five kilometres from the town; *Mirador de la Jadragas* is situated on the road to Real de La Jara.

EL PEDROSO: *The 16th-century Mudejar-style Nuestra Señora del Espino Shrine* stands on Paseo del Espino in the town.

CASTILBLANCO DE LOS ARROYOS: The *Siete Arroyos* rest and leisure area is located 5 km down the former road to El Pedroso.

ALCALÁ DEL RÍO: *Tower of Santa María de la Asunción Church*, a 14th-century Gothic-Mudejar style building built over a former mosque; hydroelectric power *dam* on the River Guadalquivir; *Monument to the Sturgeon Fisherman*, in the roundabout at the entrance to the town.



SUSTAINABLE MOTOTOURISM ROUTES

in the province of Seville

ROUTE 4

"ROUTE 66"



LA ALGABA/TORRE DE LA REINA/
GUILLENA/BURGUILLOS/CASTILBLAN-
CO DE LOS ARROYOS/ALMADÉN DE LA
PLATA/EL RONQUILLO/
EL GARROBO/ARROYO DE LA PLATA/
CASTILLO DE LAS GUARDAS/
AZNALCÓLLAR/SANLÚCAR LA
MAYOR/ESPARTINAS/GINES/CASTI-
LLEJA DE LA CUESTA/LA ALGABA

LENGTH OF THE ROUTE:

APPROX. 193 KM

ESTIMATED DURATION:

3 HOURS AND 30 MINUTES

ROUTE

DESCRIPTION

The route starts in the *Vega del Guadalquivir*, specifically in **La Algaba**. It continues towards **Guillena** and crosses **Torre de la Reina**. From

there, it proceeds towards **Burguillos** and **Castilblanco de los Arroyos**, venturing into the **Sierra Norte** until it reaches **Almadén de la Plata**, nestled between the high and rugged mountains of **Sierra Morena**.

The trip continues along a beautiful road surrounded by holm

Link to Wikiloc



for download



This route offers plenty of leisure and cuisine alternatives to create unforgettable gustatory and sensory memories.



Images: Prodetur

The journey continues towards **Aznalcóllar**, a town situated on the *River Guadiamar*. The route heads now towards **Sanlúcar la Mayor**, with a view of the solar power towers. From here, it ventures into the heart of the *Sevillian Aljarafe*, passing through **Espartinas, Gines and Castilleja de la Cuesta**, finishing at **La Algaba**.

and cork oaks towards **El Ronquillo**, one of many towns in *Sierra Morena*, that populate the *Via de la Plata* (an ancient Roman road that crossed the Iberian peninsula from north to south).

The route continues to **El Garrobo**, a small town situated in *Sierra de Zapateros*. The road ventures onward, passing next to **Arroyo de la Plata**, then **Castillo de las Guardas**, nestled high in *Sierra de Aracena*.

ALTERNATIVE ROUTES

Once at Almadén de la Plata, instead of driving back to El Ronquillo, you can take a beautiful mountain road (SE-177) that leads to Real de la Jara. You will have to drive back to the Almadén to continue towards El Ronquillo

<https://goo.gl/maps/JdCTCs2uSBnnADp6>

Copyright
by Prodetur



MUST SEE SITES

ROUTE 4

"ROUTE 66"

LA ALGABA: *Torre de los Guzmanes*, a four-storey brick tower built in 1440 by Don Juan de Guzmán; *Rodríguez de la Borbolla Bridge*, known as *Puente Viejo*. It was reopened to traffic following its restoration in 2011.

CASTILBLANCO DE LOS ARROYOS: The *Siete Arroyos* rest and leisure area is located 5 km down the old road to El Pedroso.

ALMADÉN DE LA PLATA: 14th-century medieval castle, formerly known as the *Banda de los Gallegos Castle*; an interesting *Clock Tower* situated in the 15th-century *Old Town Hall*

REAL DE LA JARA: *Museum of Natural Sciences and Museum of Popular Customs*.

EL RONQUILLO: *Serrano Lakes*, in the municipality of Guillena, less than 5 km from El Ronquillo; *La Minilla Reservoir*, on the River Rivera de Huelva, 6 km from El Ronquillo; *Granja Aventura El Ronquillo* rural sports facility; Greenway.

EL CASTILLO DE LAS GUARDAS: *Castillo de las Guardas Nature Reserve*, home to about 100 species of animals kept in a semi-open environment, located 5 km from the town.

AZNALCÓLLAR: *Aznalcóllar Reservoir*, also known as *Embalse del Agrio*, is on the outskirts of the town.

SANLÚCAR LA MAYOR: The tower and doors of *Santa María Church*, each with a distinct style and composition; *Solar power plants*: solar tower, cylindrical-parabolic and photovoltaic collectors; *Train station*, built in 1880 in a neo-Mudejar style, on the C-5 commuter line.

CASTILLEJA DE LA CUESTA: *Palatial home* where *Hernán Cortés*, the Extremaduran conqueror, lived his later years and died. It currently houses a school.



INTERESTING FACTS ABOUT ROUTE 66 VÍA DE LA PLATA

It runs south to north across Spain. The Vía de la Plata is a millenarian tourist route that runs over a former Roman road whose origin dates back to prehistoric times.

This itinerary is a significant tourist route of almost 1,000 km, covering an area of over 100,000 km². The route is built around cities with significant historical, cultural, artistic, industrial and gastronomic heritage assets, excellent natural and landscape resources, and meaningful local culture.

It runs through four regions and seven provinces. It is an essential value that reflects the power and diversity of the available tourist resources and offers alternatives and new experiences to the traveller to enjoy their leisure time.

The Ministry of Industry, Energy and Tourism and the "Ruta de la Plata" Cities Cooperation Network signed an agreement that seeks to make the Ruta de la Plata, which connects Seville and Gijón since Roman times, into a tourist destination for bikers similar to the mythical "Route 66" that runs across the United States, from coast to coast.

*Another route in Spain crosses the country from north to south. The difference in size between our country and the United States means that the length of the route is only 800 kilometres. In Seville, this route ends in **Carmona**.*

This exciting route winds through large water bodies, forests, countryside, "dehesas", towns and cities. In short, it takes you through the incredibly diverse habitats that exist in the province of Seville

Images: Photo, Video & Drone



SUSTAINABLE MOTOTOURISM ROUTES

in the province of Seville



ROUTE 5

THE GUADALQUIVIR

DOS HERMANAS/LOS PALACIOS Y VILLAFRANCA/LAS CABEZAS DE SAN JUAN/LEBRIJA/ EL CUERVO/ MONTELLANO/CORRIPE/MORÓN DE LA FRONTERA/EL CORONIL/ UTRERA /DOS HERMANAS

LENGTH OF THE ROUTE:

APPROX. 210 KM

ESTIMATED DURATION:

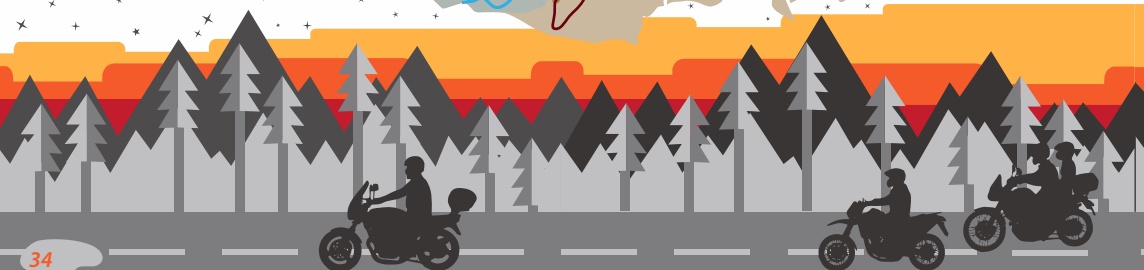
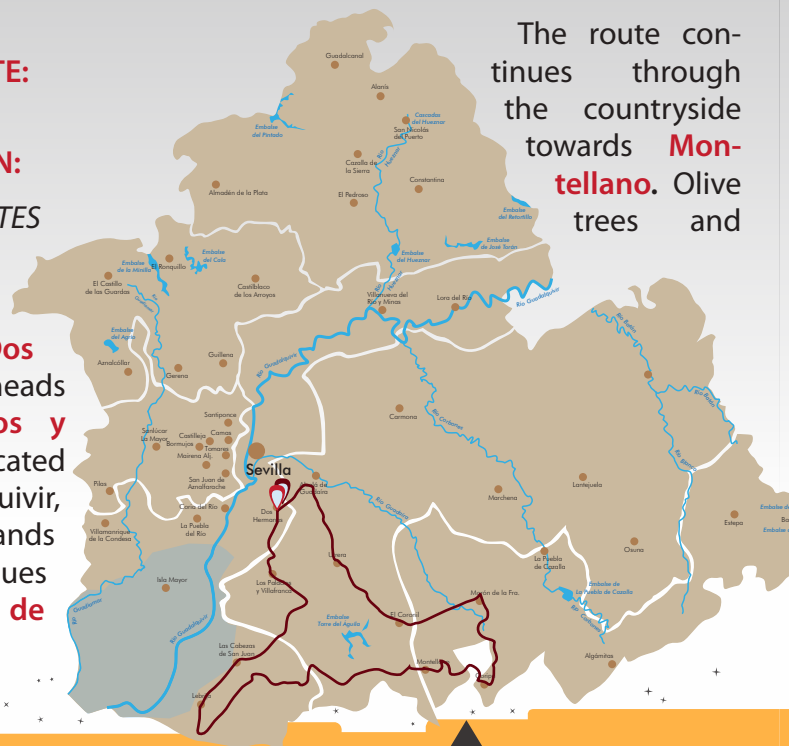
3 HOURS AND 30 MINUTES

ROUTE DESCRIPTION

This route starts in **Dos Hermanas** and heads towards **Los Palacios y Villafranca**, a town located in the lower Guadalquivir, surrounded by farmlands and marshes. It continues towards **Las Cabezas de**

San Juan along a road surrounded by croplands (cotton, corn, etc.) and from there to **Lebrija** in *Marismas del Guadalquivir County*. It is strategically situated where the *provinces of Seville, Cádiz and Huelva meet*. From here, it heads towards **El Cuervo de Sevilla**, a unique town that straddles both sides of the border between Seville and Cádiz.

The route continues through the countryside towards **Montellano**. Olive trees and



Link to Wikiloc



for download

View of Morón Castle



Morón Town Hall

The route between
Montellano and
Coripe runs along
a winding road
through the
Sevillian Sierra Sur



Lebrija



Images: Photo, Video & Drone

cereal crops abound in the landscape. Moving onward towards **Coripe**, the route ventures into the Sevillian Sierra Sur, with a stunningly beautiful natural landscape. The road reaches **Morón de la Frontera**, skirting around the mountain range, and heads to-

wards **El Coronil**, a town nestled in the Sevillian countryside. The journey continues towards **Utrera**, a city with one of the largest municipal areas in the province. From here to **Dos Hermanas**, where the route ends.



The 18th-century San Juan Bautista Church overlooks the town of Las Cabezas de San Juan



MUST SEE SITES

ROUTE 5 - THE GUADALQUIVIR

LOS PALACIOS Y VILLAFRANCA: *Parque de las Marismas*, home to almost 50 different tree and plant species native to the Lower Guadalquivir.

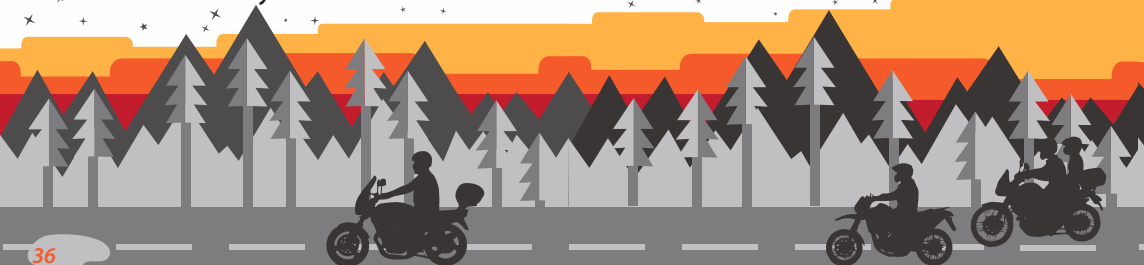
LAS CABEZAS DE SAN JUAN: The 18th-century *San Juan Bautista Church* stands on the highest point of this town.

LEBRIJA: *Santa María de la Oliva Church*, which construction started in the 13th century. The tower was built in the 18th-century.

EL CUERVO: 18th-century *Roadhouse* on the Via Augusta route of the Camino de Santiago. Interestingly, the town straddles the border between the provinces of Seville and Cádiz with streets on both sides.

MONTELLANO: *Cote Castle*, a 14th-century Gothic castle situated about 5 km from the town, near the *Quarries*.

CORIPE: *Chaparro de la Vega*, a large 600-year-old oak, 30 m in diameter





Prodetur

and 13 m high, located about 3 km from the town.

MORÓN DE LA FRONTERA: *Monument to the Gallo de Morón*, based on a local legend about ending up like a featherless and crowing cockerel (in dire straits); **San Miguel Church** with a magnificent bell tower built over a former Muslim minaret.

The Guadalquivir is the most important waterway in the province. It connects several towns on its way to the closest seaport.

EL CORONIL: *Castillo de la Villa*, built on a settlement once inhabited by the Iberian, Roman and Muslim peoples. It was rebuilt in the 14th century; **Aguza-**

deras Castle. This Moorish castle was rebuilt in the 14th century; the largest **photovoltaic solar plant** in Andalusia is situated next to the town.

UTRERA: *Santa María de la Mesa Church*, in Gothic and Renaissance style, built over a medieval church, was rebuilt in the 15th century; the construction of the Gothic **Santiago el Mayor Church** started in the 15th century. It was restored in the 18th century; **Utrera Castle**, built in the 13th century over a former Muslim farmhouse.



TRAIL ROUTES (OFF-ROAD ROUTES)

WHAT IS A TRAIL MOTORCYCLE?

Firstly, no one should be pigeon-holed (by the biker community) by the type of motorcycle one uses. Nor should one conclude that the person who buys a motorbike will use it only for its intended purpose. Simply put, what is the intended use of a TRAIL bike? Its purpose is enjoyment, just like all other motorcycles.

It can be argued that it is a motorcycle for trail riding, i.e. any type of road, lane or path.

However, the roads or tracks can be in poor condition. We all know that, unlike normal roads, streams sometimes cross rural roads without bridges or follow the contour of the uneven terrains. Nothing any bike, including a scooter, cannot manage.

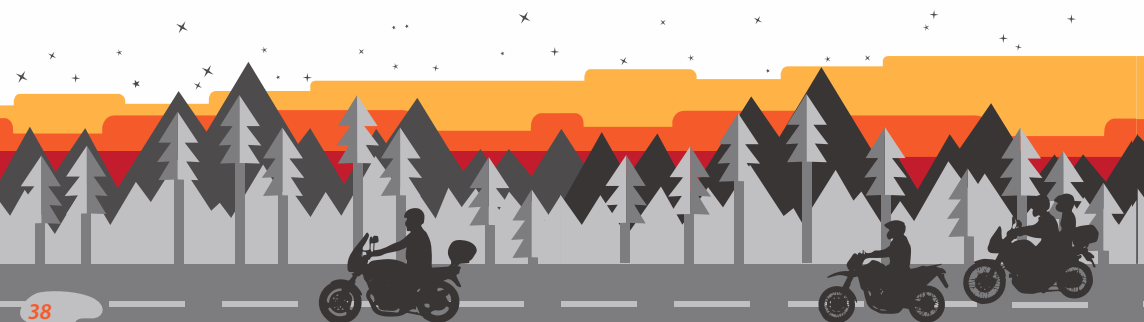
If we want to ride these roads with reasonable ease and comfort, we should choose a motorcycle with appropriate gear ratios, good suspension travel, and acceptable



The pine forests at Aznalcázar are a great stop Doñana and its surroundings

headroom to clear obstacles and wade streams, even with a pillion passenger.

In short, the ideal motorcycle for travelling down a winding road (probably, a dirt road) to picturesque



DECALOGUE OF THE MOTO-TOURIST
***"the moto-tourist drives the motorcycle
without causing noise nuisance"***

to enjoy

Prodetur

places and remote farms, castles, etc. And when the time comes to go home, you can comfortably cruise along the motorway with excellent aerodynamic protection and comfort.

There are many biking routes in our province. The following two are particularly interesting.



SUSTAINABLE MOTOTOURISM ROUTES *in the province of Seville*

ROUTE 6

OFF ROAD

THE WATER ROUTE

**CAMAS/SANTIPONCE/GERENA/
GUILLENA/EL RONQUILLO**

LENGTH OF THE ROUTE:

APPROX. 64 KM

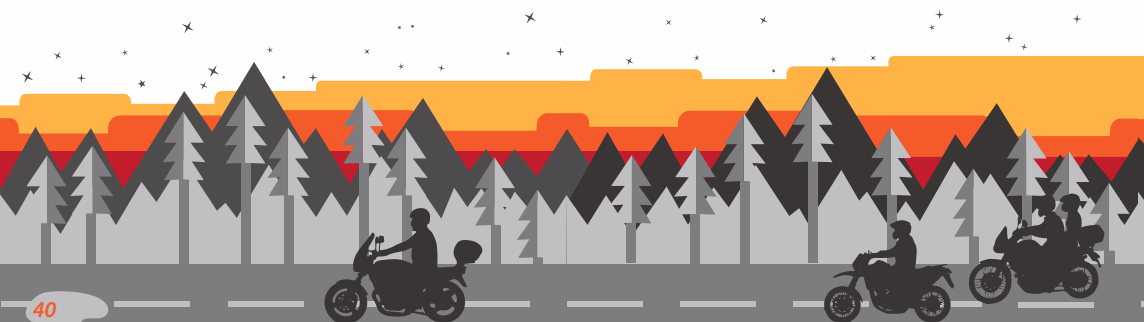
ESTIMATED DURATION:

1 HOUR AND 20 MINUTES

The Water Route, from Camas to Gerena, runs along farm tracks. It then heads towards El Gergal and Cala reservoirs and Guillena re-regulation dam, the two primary sources of power and drinking water for Seville's capital.

A route full of natural treasures, including old railway stations, reservoirs, villages, farmhouses, lakes, pre-historic remains and even the Palace of Parladé, a 19th-century building inspired by a medieval castle.

Rest areas, shelters, viewpoints, picnic areas, stops, tables, benches, bins, and information signs are scattered along the route and the "La Can-



The “culebra” is one of the accesses to the Gergal Reservoir, in Guillena



Photo, Video & Drone

tina” restaurant with restrooms and a barbecue area.

The native flora and fauna make this place a natural museum where

you will be captivated by the diversity of species, rich colours, sounds and aromas.



MUST SEE SITES

ROUTE 6 OFF ROAD

THE WATER ROUTE

CAMAS: *Monument to Bullfighting* at La Pañoleta, so-called from the triangular shape of a former bullring.

SANTIPONCE: Late 1st-century BCE *Roman theatre*; 2nd-century BCE *Roman amphitheater and city of Italica*.

GERENA: 5th-century palaeo-Christian *basilica*.

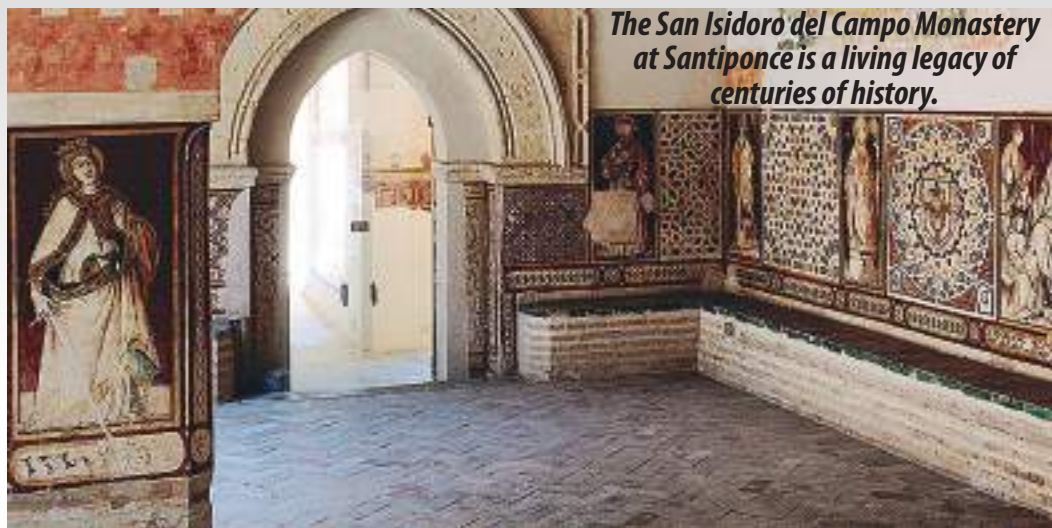
GUILLENA: Its rich natural heritage encompasses the *Riveras de Huelva and Cala rivers and the foothills of Sierra Morena*; *Nuestra Señora de Granada Church*, a 15th-century Mudejar building with three naves; *Bullring*: the oldest bullring in the province of Seville, built on the parade ground of a Muslim castle; *Town Hall*: a neoclassical building from 1789; *Parladé Palace*: a neomudéjar-style medieval castle.



The change of scenery from Sierra Morena to the Sevillian countryside is markedly notable in the town of Gerena.

EL RONQUILLO: *Serrano Lakes*, in the municipality of Guillena, less than 5 km from El Ronquillo; *La Minilla Reservoir*, on the River Rivera de Huelva, 6 km from El Ronquillo; *Granja Aventura El Ronquillo* rural sports facility; Greenway.





The San Isidoro del Campo Monastery at Santiponce is a living legacy of centuries of history.

Images: Prodetur



Images: Prodetur

SUSTAINABLE MOTOTOURISM ROUTES *in the province of Seville*



ROUTE 7

OFF ROAD

HARBOUR PILOT'S ROUTE

DOS HERMANAS/ISLA MAYOR/LOS PALACIOS/LAS CABEZAS/LEBRIJA

LENGTH OF THE ROUTE:

APPROX. 58 KM

ESTIMATED DURATION:

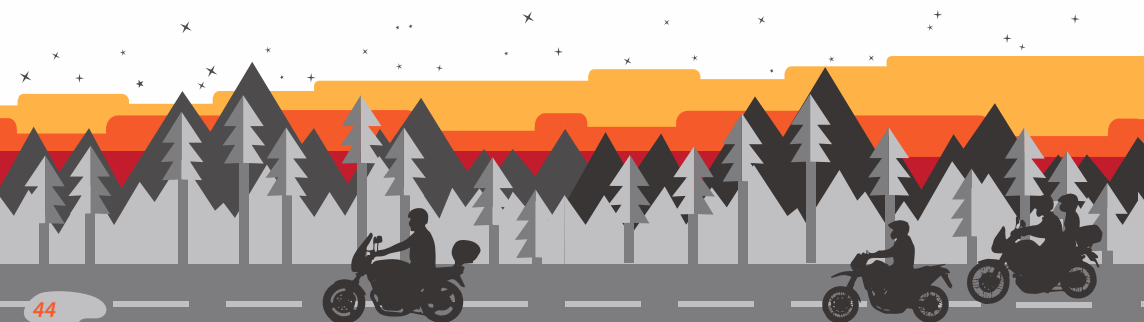
1 HOUR AND 20 MINUTES

A beautiful route that goes from Seville to Sanlúcar de Barrameda. Its moniker comes from the journey traditionally made by the "Harbour Pilot at Seville Port". A harbour pilot is a mariner who guides ships through dangerous waters, narrow channels or heavy traffic from the river's

mouth at Sanlúcar de Barrameda to the Port of Seville.

The route runs through the province of Seville, starting at Isla Mayor industrial park in Dos Hermanas to Lebrija (or vice versa).

Most of the route runs parallel to the majestic River Guadalquivir, through the Marismas del Guadalquivir districts.





Link to Wikiloc



for download

The route showcases the diverse flora and fauna that thrives in this section of the River Guadalquivir



Clay R. Van

With its wide horizons, the landscape is populated with diverse fauna, including a large flock of storks and a few flamingoes that live in the vast rice fields. Although the route consists primarily of wide gravel tracks

that run between extensive wetlands, it sometimes runs along paved roads in poor condition and sandbanks. Though a solitary hamlet or abandoned church will appear on the horizon, the route is mostly barren.



MUST SEE SITES

ROUTE 7 OFF ROAD HARBOUR PILOT'S ROUTE

DOS HERMANAS: *Alquería del Pilar*: a neo-Mudejar style building; *Alpériz Palace*: a prime example of neo-regionalist architecture in the province of Seville; *La Almona*: a building registered in the General Catalogue of Andalusian Historical Heritage; *Nuestra Señora del Valme Shrine*: built in the Mudejar style. The Pilgrimage of Valme was designated a Festival of Tourist Interest in 1976; *Santa María Magdalena Parish Church and Santa Ana Chapel*; also notable are the *pre-Roman ruins of Oripopo*.

ISLA MAYOR: *Isla Pájaro Project*, street museum; a few buildings embellished with marsh birds. The *Gañanías*, of historical-ethnographic interest, is a set-

DECALOGUE OF THE MOTO-TOUR

"the moto-tourist is mind way of life and embraces the towns or cities to wh



tlement built to house day labourers. The area is known as the Water Country and thrives on marsh-based tourism.

LOS PALACIOS Y VILAFRANCA: *Las Marismas Park*, home to almost 50 dif-



ful of the local
the customs of
ich they travel.

The Phoenicians (Lepriptza)
and the Tartessians (Nabrissa)
allegedly founded Lebrija.

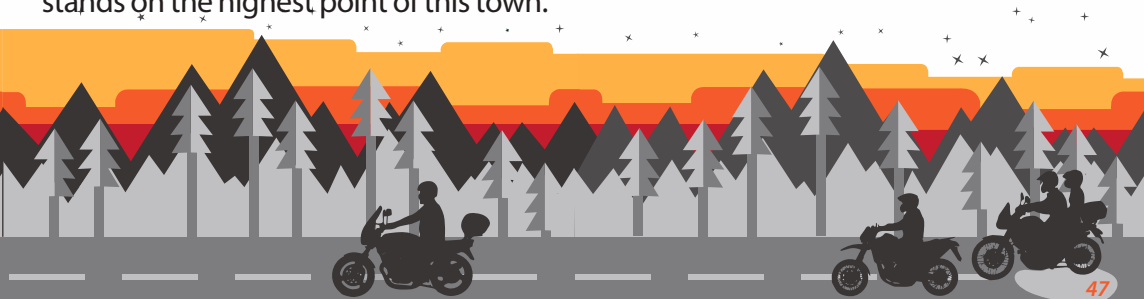


Prodetur

ferent tree and plant species native to
the Lower Guadalquivir.

LAS CABEZAS DE SAN JUAN: The
18th-century **San Juan Bautista Church**
stands on the highest point of this town.

LEBRIJA: **Santa María de la Oliva Church**, which construction started in
the 13th century. The tower was built in
the 18th-century.



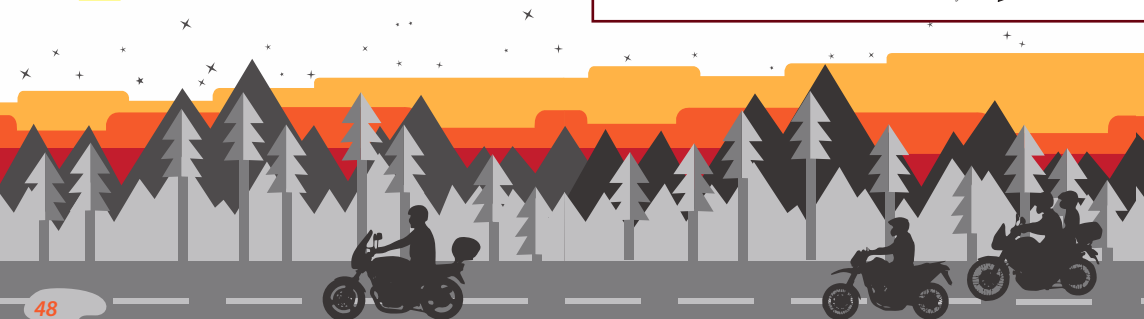
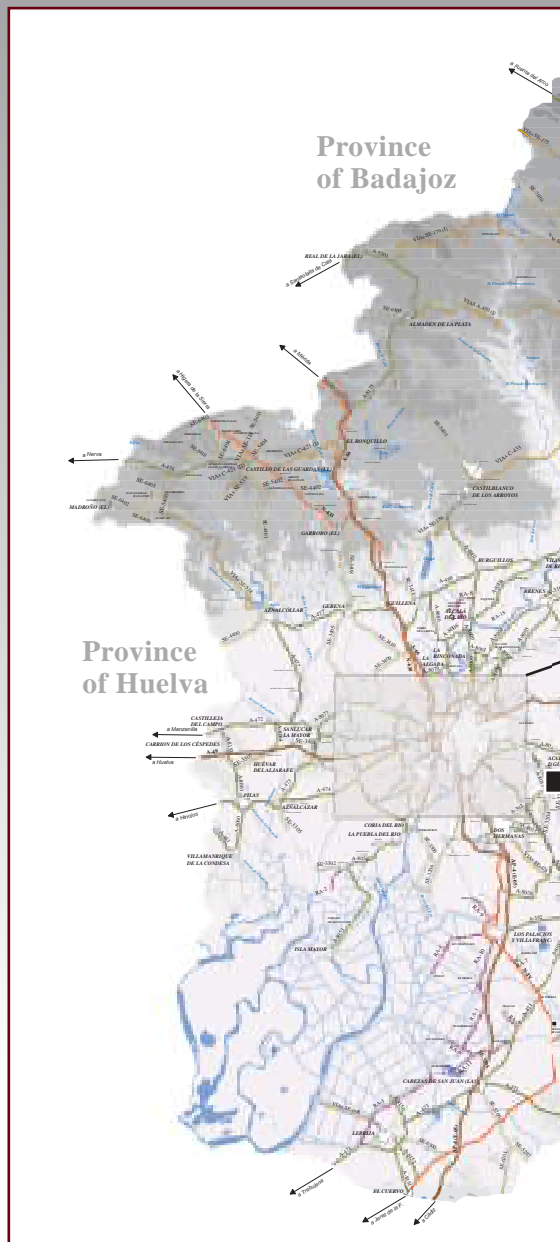


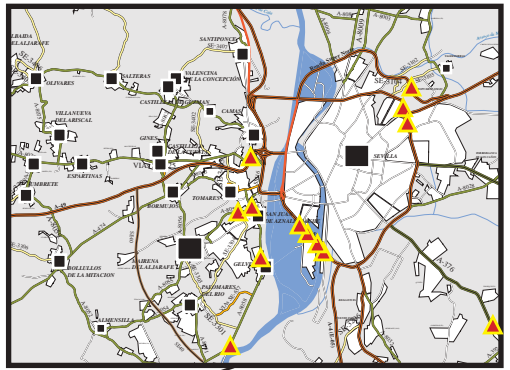
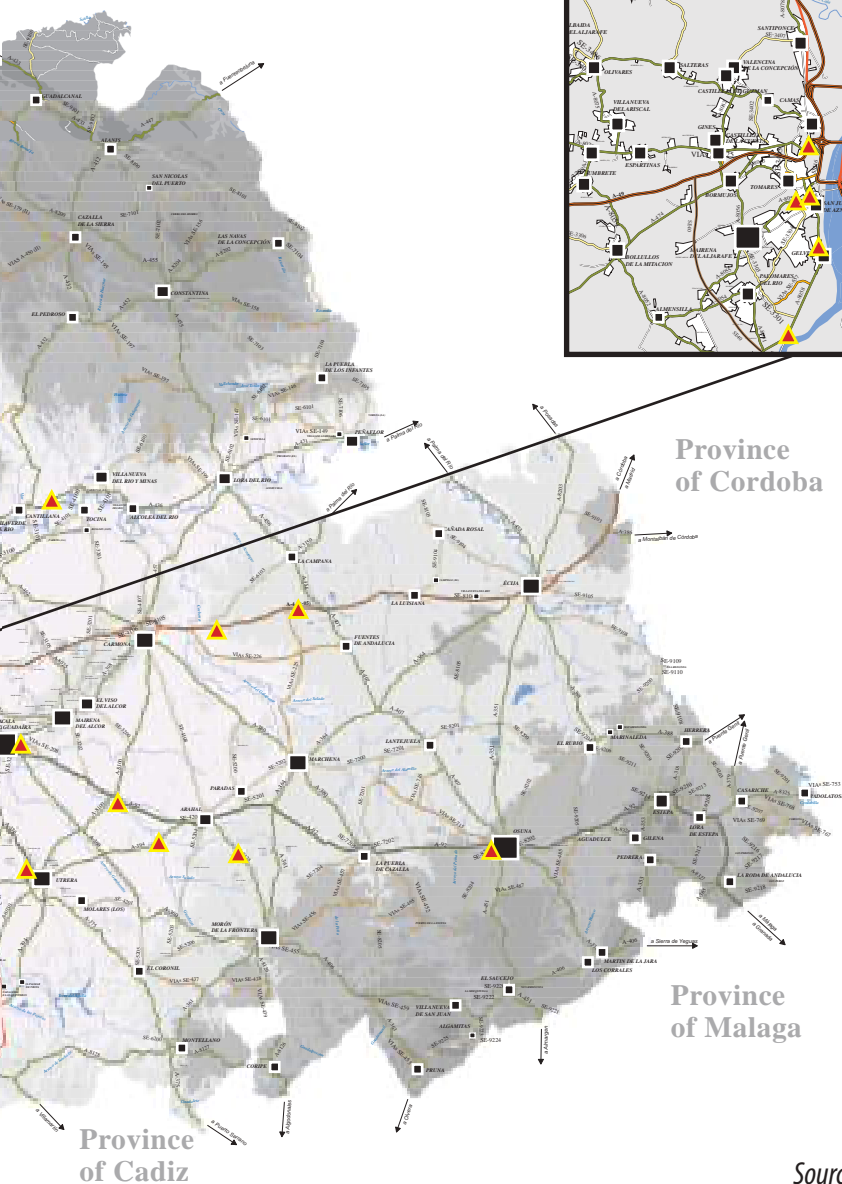
QR code for finding Petrol Stations
in the province of Seville

ROAD MAP of Seville Province

Legend

-  DUAL MOTORWAY
-  NATIONAL ROAD
-  LOCAL ROAD
-  REGIONAL ROAD
-  TOWNS AND CITIES
-  STATIONARY SPEED CAMS





**Metropolitan
Area**

**Province
of Cordoba**

**Province
of Malaga**

**Province
of Cadiz**

Source: Seville County Council



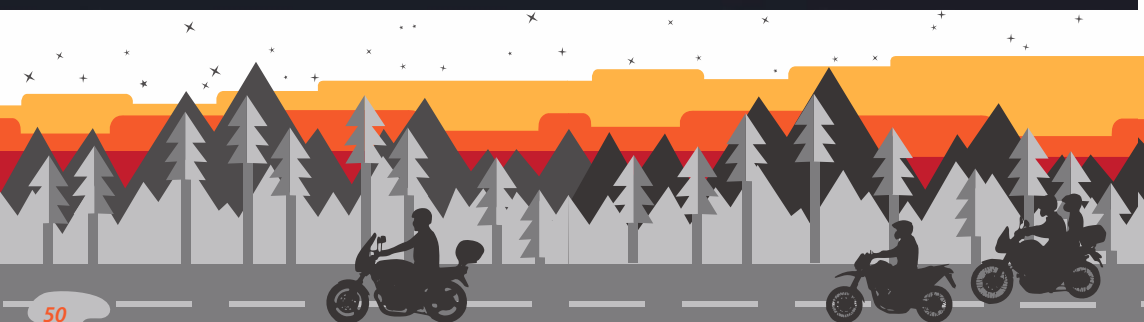
Doing routes is the best possible experience for a biker, be it a newbie biker or someone with thirty years of experience



DECALOGUE OF THE MOTO-TOURIST

“the moto-tourist greets other moto-tourists on the road.”

Stock



10 QUICK TIPS TO DO A ROUTE ON A MOTORCYCLE

Doing a route on a motorcycle, whether long or short, is a rewarding experience for any biker. *It doesn't matter if you have been riding a bike for years or going on your first ride.* That feeling is like no other.

Are you one of those people who thinks that a good plan comes together "on a whim" and you decide to do it "on the spur of the moment"? I don't mean to burst your free-spirit balloon, but your motorcycle outings will most likely end up being quite disappointing. You certainly have to leave room for improvisation, choosing a different place to eat, taking an alternative route if you feel adventurous, but a good motorcycle route must be planned. And you have to prepare it well.

Below are some essential tips to ensure your motorcycle trip is a success and does not become an endless stream of "I wish we had thought of that before leaving home".

1 - PLAN THE ROUTE.

It is essential to *plan, where possible, the route you will take*, a suitable departure time and stops. If you fancy trying the local cuisine, it might be a good idea to *check out the local restaurants*. If you (or any of your fellow travellers) have special food needs (allergies, intolerances, vegetarian or vegan), *find out if any restaurant can accommodate your food needs*. Otherwise, it would make more sense to prepare some sandwiches or bring



along food and stop at a local picnic area.

Depending on the distance you will travel and the motorcycle's range, installing a **petrol station finder** app for refuelling might be a good idea. *This guide includes a QR code for finding petrol stations.*

Nor should we forget the **stops to rest**. You can do it when you refuel or as needed. It is all about enjoying the experience, not about arriving sooner or later at your destination. If you are planning a long trip, *the best option is to start early to avoid the sweltering heat in summer and some traffic at any time of the year.* Try not to finish too late in the day, so you can rest well and continue your trip the next day. **Resting is essential to avoid accidents.** Fatigue can slow your reflexes and reaction times, contributing to an unpleasant riding experience. After all, the purpose of the trip is to have fun. We can put our lives, and those of other drivers, in danger. If you need to stop and rest, do it.

2 - CHECK YOUR MOTORCYCLE

The day before the trip, check the tyre pressure, making sure they are in good

condition and free of dirt, clean the bike, check for leaks and, of course, set out with a full tank of fuel. Nothing will ruin your motorcycle ride more than a breakdown or, even worse, an accident. ***Better safe than sorry. More so if you are hitting the road.***

3 - TRAVEL LIGHT

Regardless of how long or short your outing is, **travel as light as possible**. Install **saddlebags or a luggage rack** to ride safely and comfortably if necessary. Only **carry the essentials**, including the documentation, a mobile phone with a charged battery and some cash. Plastic money is more practical than cash, but you never know. Many people pack their luggage with "just in case" items. However, you must adopt a minimalist mindset to ride a motorcycle route. It is highly improbable that you will be invited to a black-tie party, so come on, take that shirt out of your saddlebags!

4 - USE THE RIGHT EQUIPMENT

Of course, use the **essential equipment: helmet, jacket and gloves**. Don't forget that the better equipped you are, the less risk you will face in case of an accident. If you



DECALOGUE OF THE MOTO-TOURIST

"the moto-tourist considers the motorcycle a family member."



*What truly matters is
enjoying our motorcycles
and friends*

Photo, Video & Drone

do not use a high-visibility jacket, it is highly recommendable to wear a **reflective vest** when driving. We cannot overemphasise how important it is to ensure maximum visibility. The money you spend on your safety is an investment, and more so as a biker. We are the least protected travellers on the road. Spare no expense on essentials.

5 - CARRY SOME BASIC TOOLS

Spanner, a multi-purpose screwdriver, duct tape, and a **puncture repair kit can save the day**. If you get a flat tyre, you can always drive to the nearest shop and get it repaired. It will be nothing more than a passing anecdote. Otherwise, any minor mishap, such as a loose rear-view mirror, can ruin your outing.



6 - HAVE A LIGHT BREAKFAST AND BE WELL-HYDRATED

Otherwise, *fatigue will set in sooner and slow your reflexes*. The ideal solution is to stop and rest at the slightest sign of discomfort. Stretch your legs for a few minutes to get the circulation going.

7 - DRIVE CALMLY

We do not have to do a fast lap or prove anything to anyone, just enjoy the driving experience. If you go on a group ride, do not drive in a single file on dead straight stretches, *but rather in a staggered formation* so that you can see beyond the person right in front of you. This will help the other bikers know at all times where you are. If refuelling stops have been planned, everyone should stop at the same time to avoid stopping multiple times, making the journey more tedious.

8 - DO NOT PUSH THE PACE

It could trigger unnecessary risk situations. If faster moving bikes overtake you, wave at them and keep going at your pace. If you decide to join them, *go ahead and enjoy the company*.

9 - IF YOU ARE TAKING A PILLION

Do not make moves that may upset the pillion passenger. *Set up a system of signals to alert the driver if you need to stop*; for instance, two taps on the shoulder means slow down, a thumbs-up means everything is fine.

10 - ENJOY THE ROAD...

...the wind in the face, the roar of the engine, the friends, the stops, the anecdotes... *Enjoy your motorcycle!*



DECALOGUE OF THE MOTO-TOURIST
***"the moto-tourist complies with
traffic regulations."***



***Carmona's city centre reveals
its rich historical heritage, from
Tartessos to the present day***

Photo, Video & Drone

The fog blankets the Guadalquivir as the barge crosses the river at Coria del Río; an adventure that calls for maximum precautions



Photo Video & Drone



DIRECTORY OF COMPANIES

THAT ORGANISE MOTORCYCLE ROUTES'

(AND/OR RENT BIKES)



FOSIL TRIPS

(Morón de la Frontera)

<https://www.fosiltrips.com/>

XTREMABUGGY

(Bormujos)

<https://www.xtremabuggy.com/>

TODOMOTO SEVILLA

(Sevilla)

<https://grupotodomoto.com/>

ALKIMOTO

(Sevilla)

<https://www.alkimoto.net/>

RENTAL MOTORBIKE

(Sevilla)

<https://www.rentalmotorbike.com/es/>

[/alquiler-motos-sevilla](https://www.rentalmotorbike.com/es/alquiler-motos-sevilla)

MOTORIDAYS

(Sevilla)

<https://www.motoridays.com/l/espana/>

[/alquiler-motos-en-sevilla/](https://www.motoridays.com/l/espana/alquiler-motos-en-sevilla)

VESPASUR

(Sevilla)

<https://www.vespasur.es/>

TRAVELBIKE SEVILLA

(Sevilla)

<https://www.travelbike.eu/travelbike-sevilla/>

MOTOSHARE

(Sevilla)

<https://motoshare.es/alquiler-motos/sevilla>

MOTOROAD

(Sevilla)

<https://www.motoroads.com/es/motorcycle-rentals-seville-motorbike-hire-spain.aspx>

BIKES BOOKING

(Sevilla)

<https://bikesbooking.com/es/>

[/rent-a-motorcycle-in-Sevilla/](https://bikesbooking.com/es/rent-a-motorcycle-in-Sevilla/)

EL MOTORISTA

(Sevilla)

<https://www.elmotorista.es/alquiler/sevilla>



CLUBS AND RALLIES

VARIOUS MOTORCYCLE GROUPS, COMMUNITIES AND CLUBS IN SEVILLE

MOTO CLUB NEBRIXA

(Lebrija)

GRUPO MOTORISTA EL CUERVO

(El cuervo)

grupomotoristaelcuervo@hotmail.com

MOTOCLUB TORREDALEA

(El coronil)

motoclub.lostorredalea@gmail.com

MOTOCLUB ERRE QUE ERRE

MOTOCLUB CAZALLA DE LA SIERRA

(Cazalla de la sierra)

<http://motoclubcazalladelasierra.blogspot.com/>

ÁGUILAS BIKERS SEVILLA

(Mairena del Aljarafe)

aguilabikerssevilla@gmail.com

EL MYZIL COMUNIDAD MOTERA

C/. Horizonte

(41927 - Mairena del Aljarafe)

685 105 958

MOTOGRUPO HIJOS DE GERION

C/. Tesalónica, 4

(41007- Sevilla)

MOTERAS LIBERTAD DE ALAS

C/. María Fulmen, 1 - Esc 3, Bajo G

(41019 - Sevilla)

647 294 937

INCANSABLES SEVILLA PEÑA MOTERA

(Sevilla)

losincansablesevilla@gmail.com

LOS INDOMAOS LA ALGABA PEÑA MOTERA

(La Algaba)

697 435 343

ASOCIACIÓN CULTURAL MOTERA

HARLEY "MOSTACHONES DE UTRERA"

Utrera (Sevilla)

losmostachonesdeutrera@yahoo.es

ACMESEVILLA MOTOCLUB BORMUJOS

(Bormujos)

info@acmesevilla.com

722 16 35 76

MOTOCLUB AMAZONAS

(Sevilla)

motoclub_amazonas@yahoo.es

955 00 00 00

MOTOCLUB GAMBRINUS CONSTANTINA

(Constantina)

motoclubgambrianus@gmail.com

620502784



MOTOCUB LA PUEBLA DEL RIO

(La Puebla del Río)

635 81 37 07

MOTOCUB LORA RACING

(Lora del Río)

motoclublora racing@hotmail.com

617 765 901

PEÑA MOTERA LOS REBELDES

(Dos Hermanas)

losrebeldeslr@hotmail.com

645985062

PEÑA MOTERA RINCONERA

(La Rinconada)

jpmolinal@hotmail.com

658 367 805

PEÑA MOTERA

RUEDAS LISAS LOS CORRALES

(Los Corrales)

ruedaslisasloscorrales@gmail.com

TORTUGUITAS BIKERS CLUB

(Sevilla)

mingoj@gmail.com

CLUB DEPORTIVO

MOTOTURISMO SEVILLA

(Sevilla)

mototurismosevilla@gmail.com

ASOCIACION CULTURAL DEPORTIVA

MOTOCUB SEVILLA (ACDM)

(Sevilla)

acdmsevillamotoclub@gmail.com

MOTOCUB ASOCIACIÓN MOTERA LAGUNA SECA

(Tocina - Los Rosales)

motoclublagunaseca@gmail.com

619292709

MOTOCUB VESTACADOS SCOOTER & SIDECAR CLÁSICO

vestacados@gmail.com

605377510

DUCATI CLUB ANDALUCÍA

(Sevilla)

645764583

MOTOCUB LOS MOTEROS DEL SUR ECOLOGISTAS

(Castilleja de la Cuesta)

info@losmoterossur.com

722 80 01 36

MOTOCUB ALJARAFE

(Castilleja De La Cuesta)

www.motoclubaljarafe.com

CTA - CLUB TRAIL ANDALUCÍA

<https://www.club-trail-andalucia.com>





BIBLIOGRAPHY

<https://www.tienda-moto.com>

<https://>

blog.tamaritmotorcycles.com/

<https://www.race.es>

<http://www.dgt.es/es/>

<https://grupotodomoto.com>

Wikipedia

<http://jaimebarriga.blogspot.com>

<https://steemit.com/>

<https://motosmas.com.ar/>

www.motociclismo.es

www.motosprint.com

SPECIAL ACKNOWLEDGEMENTS

Pepe Pascual, de Grupo TodoMoto

Juan Melgar, de TRT Motorcycle KTM

Ecomobility Green World

OSHAY Motorsport

www.tiendamoto.com

Francisco Díaz Talaverón (Paco)

Stock



Published by:
PRODETUR, S. A.
Turismo de la Provincia de Sevilla
Leonardo da Vinci, 16
Isla de la Cartuja
41092, Sevilla
Tel. +34 954 486 800
www.turismosevilla.org

Produced by:
Evento park el Ronquillo, S.L.

Content management:
Manuel Álvarez Ossorio

Design and layout:
Antonio Hidalgo Iglesias (BiciActivity)

Legal Deposit:
SE-1956-2022

1st edition. September 2022

Prints: Tecnographic, S.L. (Seville)





Tourism of the Province of Seville

(Prodetur, S.A.)

Leonardo Da Vinci, 16

Isla de la Cartuja - 41092 Sevilla

Tel. +34 954 486 800

Tourism Office

Plaza del Triunfo, 1

41004 - Sevilla

Tel. +34 954 210 005

infoturismo@prodetur.es

www.turismosevilla.org



/TurismoProvinciaSevilla



@Sevilla_Turismo



/SevillaTurismo

Andalucía

www.turismosevilla.org

Sustainable Mototourism Guide to the Province of Seville